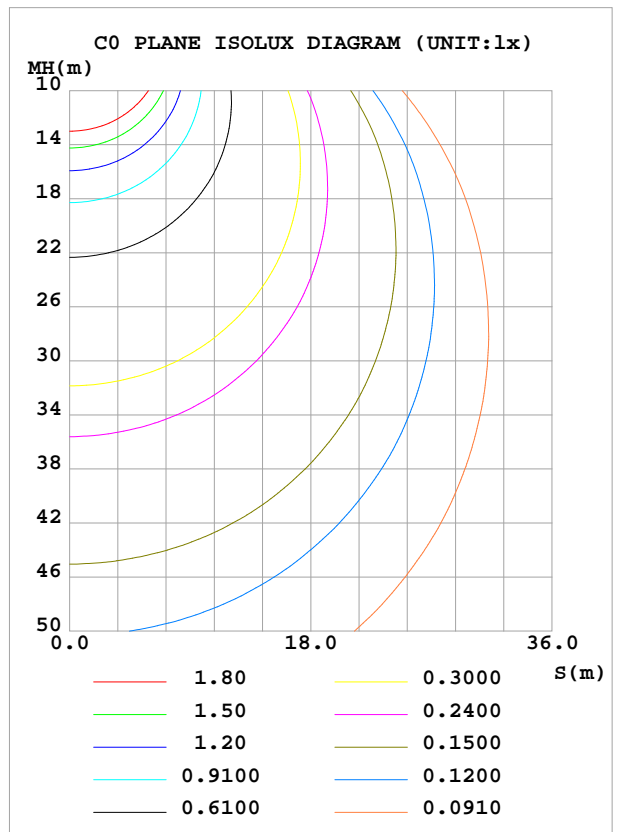
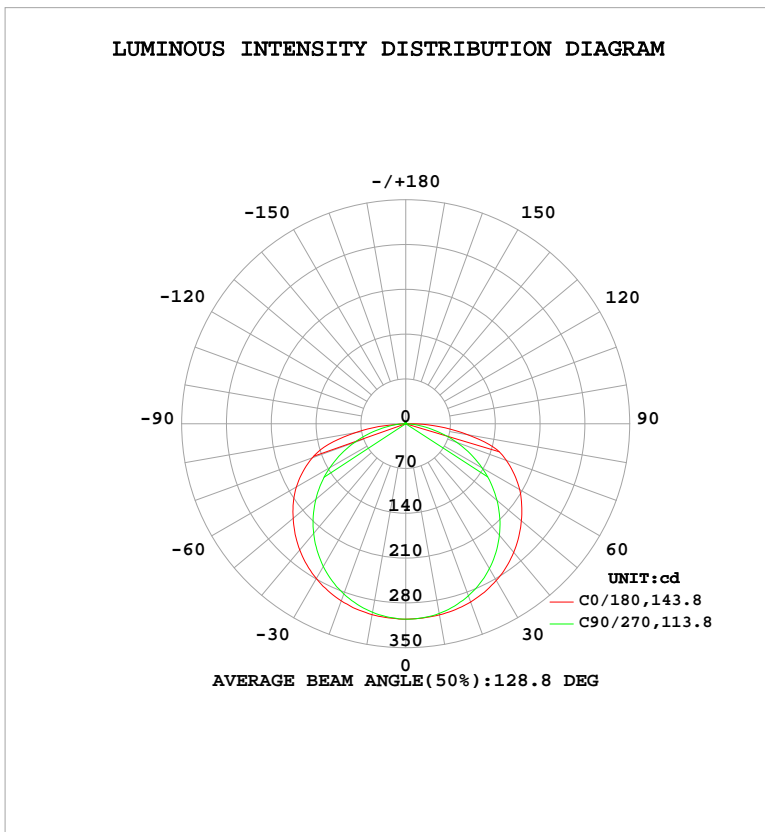


LUMINAIRE PHOTOMETRIC TEST REPORT

Test:U:23.998V I:0.4369A P:10.485W PF:1.0000 Freq:0Hz Lamp Flux:1064.55x1 lm		
NAME: SL-ID-30K-HP-24	TYPE:	WEIGHT: KG
SPEC.: 10W	DIM.: 1000*10*2(MM)	SERIAL No.: 01
MFR.: Signcomplex	SUR.: 1000*10(MM)	Shielding Angle:

DATA OF LAMP		PHOTOMETRIC DATA Eff: 101.53 lm/W			
MODEL	LED	I _{max} (cd)	305.5	S/MH(C0/180)	1.36
NOMINAL POWER(W)	10	LOR(%)	100.0	S/MH(C90/270)	1.25
RATED VOLTAGE(V)	24	TOTAL FLUX(lm)	1064.5	η UP, DN(C0-180)	0.5,49.6
NOMINAL FLUX(lm)	1064.55	CIE CLASS	DIRECT	η UP, DN(C180-360)	0.5,49.4
LAMPS INSIDE	1	η up(%)	1.0	CIBSE SHR NOM	1.50
TEST VOLTAGE(V)	24	η down(%)	99.0	CIBSE SHR MAX	1.55



C Range: 0 - 360DEG
 C Interval: 22.5DEG
 Test Speed: HIGH
 Temperature:25.3°C
 Operators:DAMIN
 Test Date:26 August 2024

γ Range: 0 - 180DEG
 γ Interval: 1.0DEG
 Test System:EVERFINE GO-2000B_V1 SYSTEM V2.00.488
 Humidity:65.0%
 Test Distance:10.460m [K=1.0000]
 Remarks:

ZONAL FLUX DIAGRAM

ZONAL FLUX DIAGRAM:

γ	C0	C45	C90	C135	C180	C225	C270	C315	γ	Φ zone	Φ total	%lum,lamp
10	303.2	302.5	300.9	302.0	303.0	301.0	299.2	301.2	0- 10	28.96	28.96	2.72,2.72
20	296.4	292.7	286.2	290.6	294.5	288.8	282.9	290.2	10- 20	83.90	112.9	10.6,10.6
30	282.7	274.9	261.5	271.0	279.4	269.0	257.8	271.9	20- 30	129.9	242.8	22.8,22.8
40	262.4	250.0	227.6	244.4	257.6	242.4	223.9	246.6	30- 40	161.9	404.7	38,38
50	235.8	218.5	186.1	211.2	229.6	210.0	183.3	215.5	40- 50	176.5	581.2	54.6,54.6
60	205.6	182.0	137.7	173.0	197.3	173.4	136.6	179.6	50- 60	172.7	754.0	70.8,70.8
70	167.3	142.8	84.57	130.1	155.3	133.8	84.87	141.7	60- 70	151.4	905.3	85,85
80	98.21	92.64	31.62	59.82	79.49	80.52	33.77	96.05	70- 80	110.4	1016	95.4,95.4
90	10.15	6.462	0.7587	1.002	0.6509	0.6411	1.368	12.49	80- 90	38.54	1054	99,99
100	0.9773	0.7544	0.5820	1.097	0.9802	0.9369	0.7793	0.9178	90-100	1.427	1056	99.2,99.2
110	1.152	1.018	1.131	1.360	1.318	1.233	1.107	1.221	100-110	1.104	1057	99.3,99.3
120	1.441	1.339	1.435	1.663	1.631	1.569	1.468	1.549	110-120	1.338	1058	99.4,99.4
130	1.778	1.660	1.730	1.917	1.968	1.898	1.804	1.901	120-130	1.495	1060	99.5,99.5
140	2.025	1.922	1.984	2.113	2.190	2.153	2.099	2.188	130-140	1.515	1061	99.7,99.7
150	2.231	2.160	2.205	2.277	2.355	2.358	2.337	2.409	140-150	1.372	1062	99.8,99.8
160	2.404	2.366	2.394	2.417	2.503	2.522	2.526	2.556	150-160	1.100	1064	99.9,99.9
170	2.577	2.539	2.533	2.548	2.601	2.600	2.587	2.571	160-170	0.7145	1064	100,100
180	2.627	2.596	2.591	2.581	2.618	2.604	2.599	2.581	170-180	0.2464	1065	100,100
DEG	LUMINOUS INTENSITY:cd									UNIT:lm		

Conical surface Flux(90deg): 492.31 lm

%lum = 46.2%

%lamp = 46.2%

Conical surface Flux(130deg): 833.42 lm

%lum = 78.3%

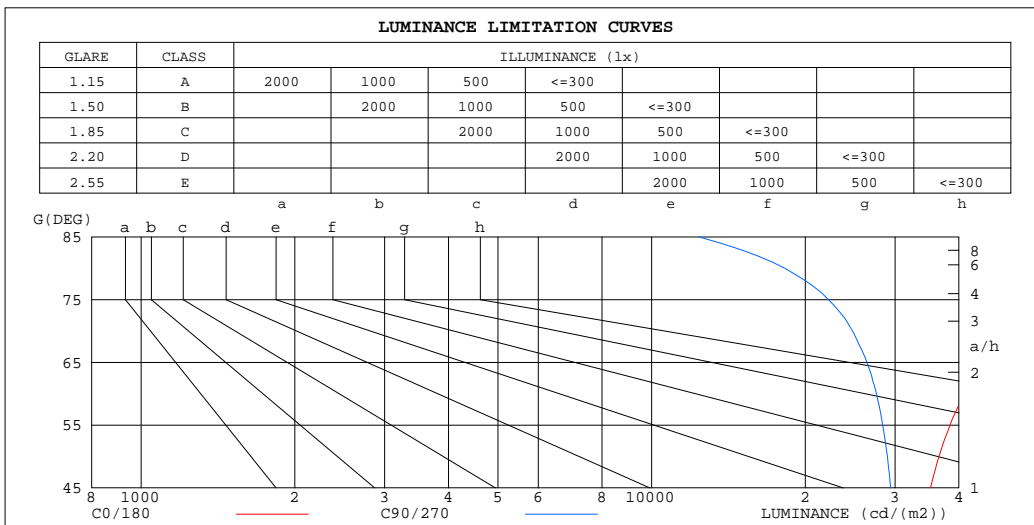
%lamp = 78.3%

C Range: 0 - 360DEG
 C Interval: 22.5DEG
 Test Speed: HIGH
 Temperature:25.3°C
 Operators:DAMIN
 Test Date:26 August 2024

γ Range: 0 - 180DEG
 γ Interval: 1.0DEG
 Test System:EVERFINE GO-2000B_V1 SYSTEM V2.00.488
 Humidity:65.0%
 Test Distance:10.460m [K=1.0000]
 Remarks:

LUMINANCE LIMITATION CURVES

Test:U:23.998V I:0.4369A P:10.485W PF:1.0000 Freq:0Hz Lamp Flux:1064.55x1 lm		
NAME: SL-ID-30K-HP-24	TYPE:	WEIGHT: KG
SPEC.: 10W	DIM.: 1000*10*2(MM)	SERIAL No.: 01
MFR.: Signcomplex	SUR.: 1000*10(MM)	Shielding Angle:



LUMINANCE cd/(m2)		
G(DEG)	C0/180	C90/270
85	60393	12374
80	56370	18225
75	54810	22201
70	48739	24749
65	44132	26417
60	40976	27561
55	38430	28361
50	36569	28970
45	35192	29416

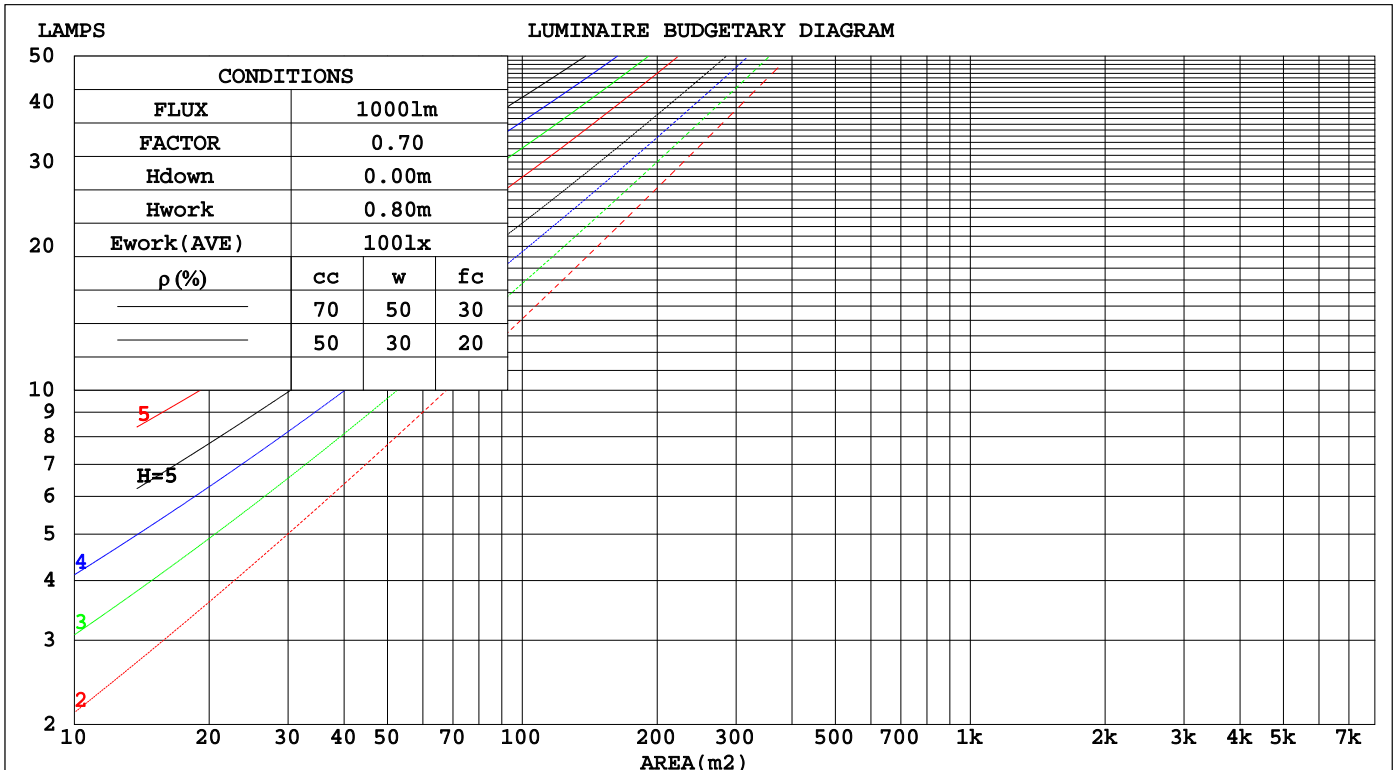
C Range: 0 - 360DEG
 C Interval: 22.5DEG
 Test Speed: HIGH
 Temperature: 25.3°C
 Operators: DAMIN
 Test Date: 26 August 2024

γ Range: 0 - 180DEG
 γ Interval: 1.0DEG
 Test System: EVERFINE GO-2000B_V1 SYSTEM V2.00.488
 Humidity: 65.0%
 Test Distance: 10.460m [K=1.0000]
 Remarks:

CU AND LUMINAIRE BUDGETARY ESTIMATE DIAGRAM

Test:U:23.998V I:0.4369A P:10.485W PF:1.0000 Freq:0Hz Lamp Flux:1064.55x1 lm		
NAME: SL-ID-30K-HP-24	TYPE:	WEIGHT: KG
SPEC.: 10W	DIM.: 1000*10*2(MM)	SERIAL No.: 01
MFR.: Signcomplex	SUR.: 1000*10(MM)	Shielding Angle:

pcc	80%			70%			50%			30%			10%			0
	50%	30%	10%	50%	30%	10%	50%	30%	10%	50%	30%	10%	50%	30%	10%	
pw																0
pfc																0
RCR	RCR:Room Cavity Ratio						Coefficients of Utilization(CU)									
0.0	1.19	1.19	1.19	1.16	1.16	1.16	1.11	1.11	1.11	1.06	1.06	1.06	1.01	1.01	1.01	.99
1.0	1.01	.97	.92	.99	.95	.91	.95	.91	.87	.90	.87	.85	.87	.84	.82	.80
2.0	.87	.80	.73	.85	.78	.72	.81	.75	.70	.78	.73	.68	.75	.70	.67	.64
3.0	.76	.67	.60	.74	.66	.59	.71	.64	.58	.68	.62	.57	.65	.60	.55	.53
4.0	.66	.57	.50	.65	.56	.49	.62	.55	.49	.60	.53	.48	.57	.52	.47	.45
5.0	.59	.49	.42	.58	.49	.42	.55	.48	.41	.53	.46	.41	.51	.45	.40	.38
6.0	.53	.43	.37	.52	.43	.36	.50	.42	.36	.48	.41	.36	.46	.40	.35	.33
7.0	.48	.39	.32	.47	.38	.32	.45	.37	.32	.44	.37	.31	.42	.36	.31	.29
8.0	.43	.35	.28	.43	.34	.28	.41	.34	.28	.40	.33	.28	.39	.32	.28	.26
9.0	.40	.31	.25	.39	.31	.25	.38	.30	.25	.37	.30	.25	.36	.29	.25	.23
10.0	.37	.28	.23	.36	.28	.23	.35	.28	.23	.34	.27	.23	.33	.27	.22	.21



C Range: 0 - 360DEG
 C Interval: 22.5DEG
 Test Speed: HIGH
 Temperature: 25.3°C
 Operators: DAMIN
 Test Date: 26 August 2024

γ Range: 0 - 180DEG
 γ Interval: 1.0DEG
 Test System: EVERFINE GO-2000B_V1 SYSTEM V2.00.488
 Humidity: 65.0%
 Test Distance: 10.460m [K=1.0000]
 Remarks:

WEC AND CCEC

Test:U:23.998V I:0.4369A P:10.485W PF:1.0000 Freq:0Hz		
Lamp Flux:1064.55x1 lm		
NAME: SL-ID-30K-HP-24	TYPE:	WEIGHT: KG
SPEC.: 10W	DIM.: 1000*10*2(MM)	SERIAL No.: 01
MFR.: Signcomplex	SUR.: 1000*10(MM)	Shielding Angle:

ρcc	80%			70%			50%			30%			10%			0
ρw	50%	30%	10%	50%	30%	10%	50%	30%	10%	50%	30%	10%	50%	30%	10%	0
ρfc	20%			20%			20%			20%			20%			0
RCR	RCR:Room Cavity Ratio						Wall Exitance Coefficients(WEC)									
0.0																
1.0	.352	.200	.063	.344	.196	.062	.330	.189	.061	.317	.183	.059	.305	.177	.057	
2.0	.322	.176	.054	.315	.174	.053	.303	.168	.052	.291	.163	.051	.280	.159	.050	
3.0	.292	.156	.047	.287	.153	.046	.275	.149	.045	.265	.145	.045	.256	.142	.044	
4.0	.266	.138	.041	.261	.137	.040	.251	.133	.040	.242	.130	.039	.234	.127	.039	
5.0	.244	.124	.036	.239	.123	.036	.230	.120	.035	.222	.117	.035	.215	.115	.034	
6.0	.224	.113	.032	.220	.111	.032	.212	.109	.032	.205	.107	.031	.198	.104	.031	
7.0	.208	.103	.029	.204	.102	.029	.197	.100	.029	.190	.098	.028	.184	.096	.028	
8.0	.193	.094	.027	.190	.093	.026	.183	.092	.026	.177	.090	.026	.172	.088	.026	
9.0	.180	.087	.024	.177	.086	.024	.171	.085	.024	.166	.083	.024	.161	.082	.024	
10.0	.169	.081	.022	.166	.080	.022	.161	.079	.022	.156	.078	.022	.152	.076	.022	

ρcc	80%			70%			50%			30%			10%			0
ρw	50%	30%	10%	50%	30%	10%	50%	30%	10%	50%	30%	10%	50%	30%	10%	0
ρfc	20%			20%			20%			20%			20%			0
RCR	RCR:Room Cavity Ratio						Ceiling Cavity Exitance Coefficients(CCEC)									
0.0	.198	.198	.198	.169	.169	.169	.115	.115	.115	.066	.066	.066	.021	.021	.021	
1.0	.191	.163	.138	.163	.140	.119	.112	.096	.082	.064	.056	.048	.021	.018	.016	
2.0	.184	.139	.102	.157	.120	.088	.108	.083	.061	.062	.048	.036	.020	.016	.012	
3.0	.176	.122	.079	.151	.105	.068	.104	.073	.048	.060	.043	.028	.019	.014	.009	
4.0	.169	.109	.063	.145	.094	.055	.100	.066	.039	.058	.038	.023	.019	.013	.008	
5.0	.161	.099	.053	.138	.085	.046	.095	.060	.032	.055	.035	.019	.018	.011	.006	
6.0	.154	.090	.045	.132	.078	.039	.091	.055	.028	.053	.032	.017	.017	.011	.005	
7.0	.146	.084	.040	.126	.072	.035	.087	.051	.024	.051	.030	.015	.016	.010	.005	
8.0	.140	.078	.035	.120	.068	.031	.083	.047	.022	.048	.028	.013	.016	.009	.004	
9.0	.133	.073	.032	.115	.063	.028	.080	.044	.020	.046	.026	.012	.015	.009	.004	
10.0	.127	.069	.030	.110	.060	.026	.076	.042	.018	.044	.025	.011	.014	.008	.004	

C Range: 0 - 360DEG
 C Interval: 22.5DEG
 Test Speed: HIGH
 Temperature:25.3°C
 Operators:DAMIN
 Test Date:26 August 2024

γ Range: 0 - 180DEG
 γ Interval: 1.0DEG
 Test System:EVERFINE GO-2000B_V1 SYSTEM V2.00.488
 Humidity:65.0%
 Test Distance:10.460m [K=1.0000]
 Remarks:

UGR(Unified Glare Rating) Table

Test:U:23.998V I:0.4369A P:10.485W PF:1.0000 Freq:0Hz Lamp Flux:1064.55x1 lm		
NAME: SL-ID-30K-HP-24	TYPE:	WEIGHT: KG
SPEC.: 10W	DIM.: 1000*10*2(MM)	SERIAL No.: 01
MFR.: Signcomplex	SUR.: 1000*10(MM)	Shielding Angle:

ceiling/cavity	0.7	0.7	0.5	0.5	0.3	0.7	0.7	0.5	0.5	0.3
walls	0.5	0.3	0.5	0.3	0.3	0.5	0.3	0.5	0.3	0.3
working plane	0.2	0.2	0.2	0.2	0.2	0.2	0.2	0.2	0.2	0.2

Room dimensions	Viewed crosswise					Viewed endwise				
x = 2H y = 2H	25.5	27.1	25.8	27.3	27.6	23.4	25.0	23.7	25.3	25.5
3H	27.9	29.4	28.2	29.7	29.9	24.8	26.3	25.1	26.6	26.8
4H	29.2	30.6	29.5	30.8	31.1	25.3	26.7	25.6	27.0	27.3
6H	30.2	31.5	30.5	31.8	32.1	25.6	26.9	26.0	27.2	27.5
8H	30.5	31.8	30.9	32.1	32.5	25.6	26.9	26.0	27.3	27.6
12H	30.8	32.1	31.2	32.4	32.7	25.6	26.9	26.0	27.2	27.5
4H 2H	26.0	27.4	26.4	27.7	28.0	24.5	25.9	24.8	26.2	26.5
3H	28.7	29.9	29.0	30.2	30.6	26.1	27.4	26.5	27.7	28.0
4H	30.1	31.2	30.5	31.6	31.9	26.8	28.0	27.2	28.3	28.7
6H	31.2	32.3	31.7	32.6	33.0	27.3	28.3	27.7	28.7	29.1
8H	31.7	32.6	32.1	33.0	33.4	27.4	28.3	27.8	28.7	29.1
12H	32.0	32.9	32.5	33.3	33.8	27.4	28.3	27.9	28.7	29.1
8H 4H	30.3	31.3	30.8	31.7	32.1	27.6	28.6	28.0	29.0	29.4
6H	31.7	32.5	32.1	32.9	33.4	28.3	29.1	28.8	29.6	30.0
8H	32.2	32.9	32.7	33.4	33.9	28.6	29.3	29.1	29.7	30.2
12H	32.7	33.3	33.2	33.8	34.3	28.7	29.3	29.2	29.8	30.3
12H 4H	30.3	31.2	30.8	31.6	32.1	27.8	28.6	28.2	29.1	29.5
6H	31.7	32.4	32.2	32.9	33.4	28.6	29.3	29.1	29.8	30.2
8H	32.3	33.0	32.8	33.4	33.9	28.9	29.5	29.4	30.0	30.5

Variations with the observer position at spacings(CIE Pub.117):		
S = 1.0H	+ 0.1 / - 0.1	+ 0.1 / - 0.2
1.5H	+ 0.1 / - 0.2	+ 0.2 / - 0.3
2.0H	+ 0.1 / - 0.2	+ 0.2 / - 0.5

CIE Pub.117, 1065 lm Total Lamp Luminous Flux Correct (8log(F/F0) = 0.2)
Area: 0.01 m2

C Range: 0 - 360DEG	γ Range: 0 - 180DEG
C Interval: 22.5DEG	γ Interval: 1.0DEG
Test Speed: HIGH	Test System:EVERFINE GO-2000B_V1 SYSTEM V2.00.488
Temperature:25.3°C	Humidity:65.0%
Operators:DAMIN	Test Distance:10.460m [K=1.0000]
Test Date:26 August 2024	Remarks:

UTILIZATION FACTORS TABLE

Test:U:23.998V I:0.4369A P:10.485W PF:1.0000 Freq:0Hz Lamp Flux:1064.55x1 lm		
NAME: SL-ID-30K-HP-24	TYPE:	WEIGHT: KG
SPEC.: 10W	DIM.: 1000*10*2(MM)	SERIAL No.: 01
MFR.: Signcomplex	SUR.: 1000*10(MM)	Shielding Angle:

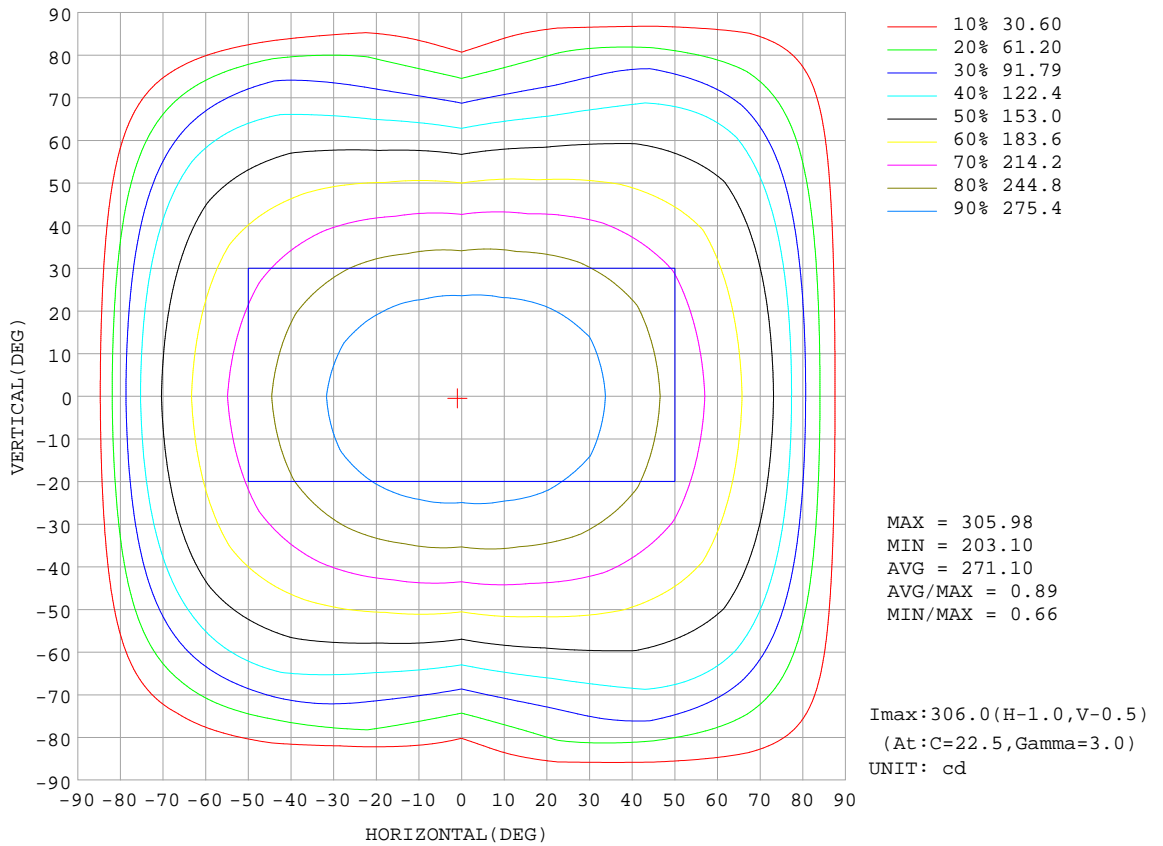
REFLECTANCE										
Ceiling	0.8	0.8	0.8	0.7	0.7	0.7	0.5	0.5	0.5	0
Walls	0.7	0.5	0.3	0.7	0.5	0.3	0.7	0.5	0.3	0
Working plane	0.2	0.2	0.2	0.2	0.2	0.2	0.2	0.2	0.2	0
ROOM INDEX	UTILIZATION FACTORS(PERCENT) $k(RI) \times RCR = 5$									
k = 0.60	54	42	35	53	42	34	52	41	34	27
0.80	64	51	43	63	51	43	61	50	43	35
1.00	72	60	52	71	59	52	68	61	51	43
1.25	79	68	60	78	67	59	75	65	59	50
1.50	84	73	66	82	72	65	79	70	64	56
2.00	92	82	75	90	81	74	86	78	72	64
2.50	96	87	80	94	86	79	90	83	77	68
3.00	100	92	86	97	90	84	93	87	82	73
4.00	104	98	92	101	96	91	97	92	88	78
5.00	107	101	97	104	99	95	99	95	92	82
ROOM INDEX	UF(total)									Direct
According to DIN EN 13032-2 2004			Suspended				SHRNOM = 1.25			

C Range: 0 - 360DEG
 C Interval: 22.5DEG
 Test Speed: HIGH
 Temperature:25.3°C
 Operators:DAMIN
 Test Date:26 August 2024

γ Range: 0 - 180DEG
 γ Interval: 1.0DEG
 Test System:EVERFINE GO-2000B_V1 SYSTEM V2.00.488
 Humidity:65.0%
 Test Distance:10.460m [K=1.0000]
 Remarks:

ISOCANDELA DIAGRAM

Test:U:23.998V I:0.4369A P:10.485W PF:1.0000 Freq:0Hz Lamp Flux:1064.55x1 lm		
NAME: SL-ID-30K-HP-24	TYPE:	WEIGHT: KG
SPEC.: 10W	DIM.: 1000*10*2(MM)	SERIAL No.: 01
MFR.: Signcomplex	SUR.: 1000*10(MM)	Shielding Angle:



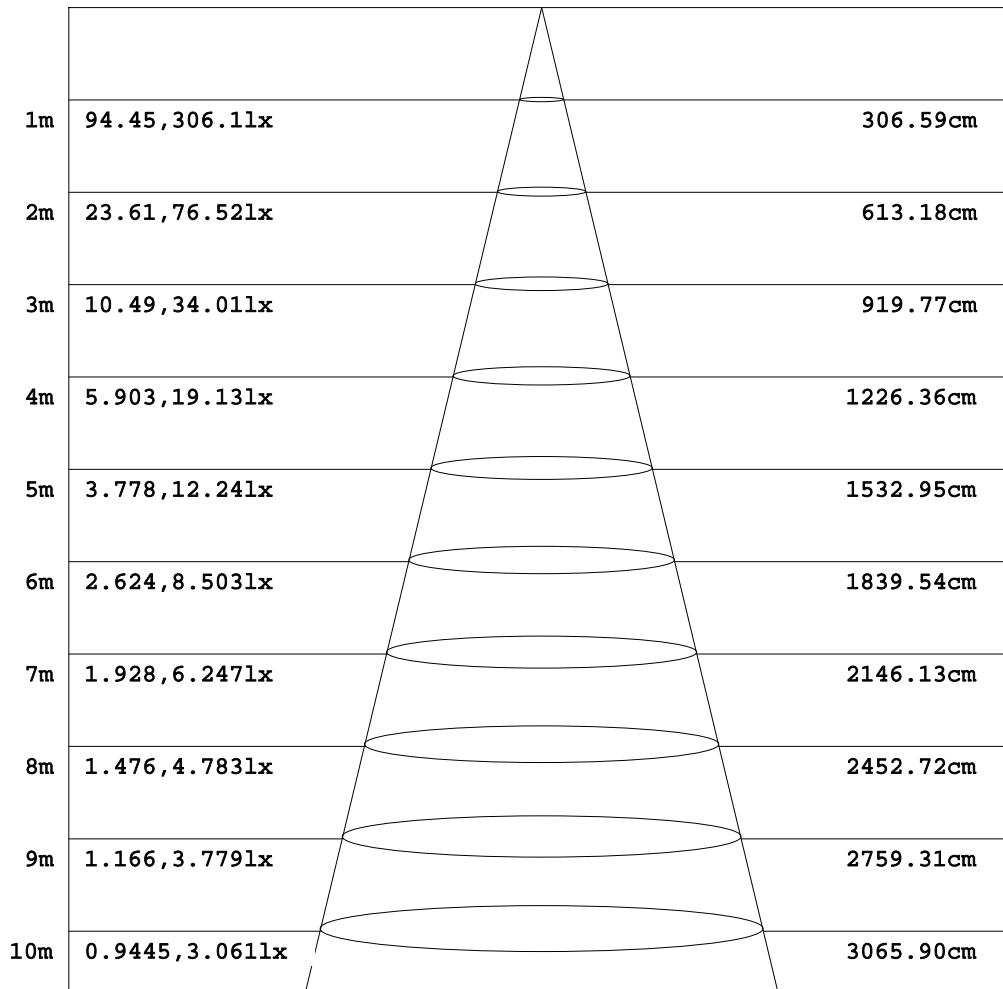
C Range: 0 - 360DEG
 C Interval: 22.5DEG
 Test Speed: HIGH
 Temperature:25.3°C
 Operators:DAMIN
 Test Date:26 August 2024

γ Range: 0 - 180DEG
 γ Interval: 1.0DEG
 Test System:EVERFINE GO-2000B_V1 SYSTEM V2.00.488
 Humidity:65.0%
 Test Distance:10.460m [K=1.0000]
 Remarks:

AAI Figure

Test:U:23.998V I:0.4369A P:10.485W PF:1.0000 Freq:0Hz Lamp Flux:1064.55x1 lm		
NAME: SL-ID-30K-HP-24	TYPE:	WEIGHT: KG
SPEC.: 10W	DIM.: 1000*10*2(MM)	SERIAL No.: 01
MFR.: Signcomplex	SUR.: 1000*10(MM)	Shielding Angle:

Flux out:703.6 lm



Angle:113.76deg

Height

Eavg, Emax

Diameter

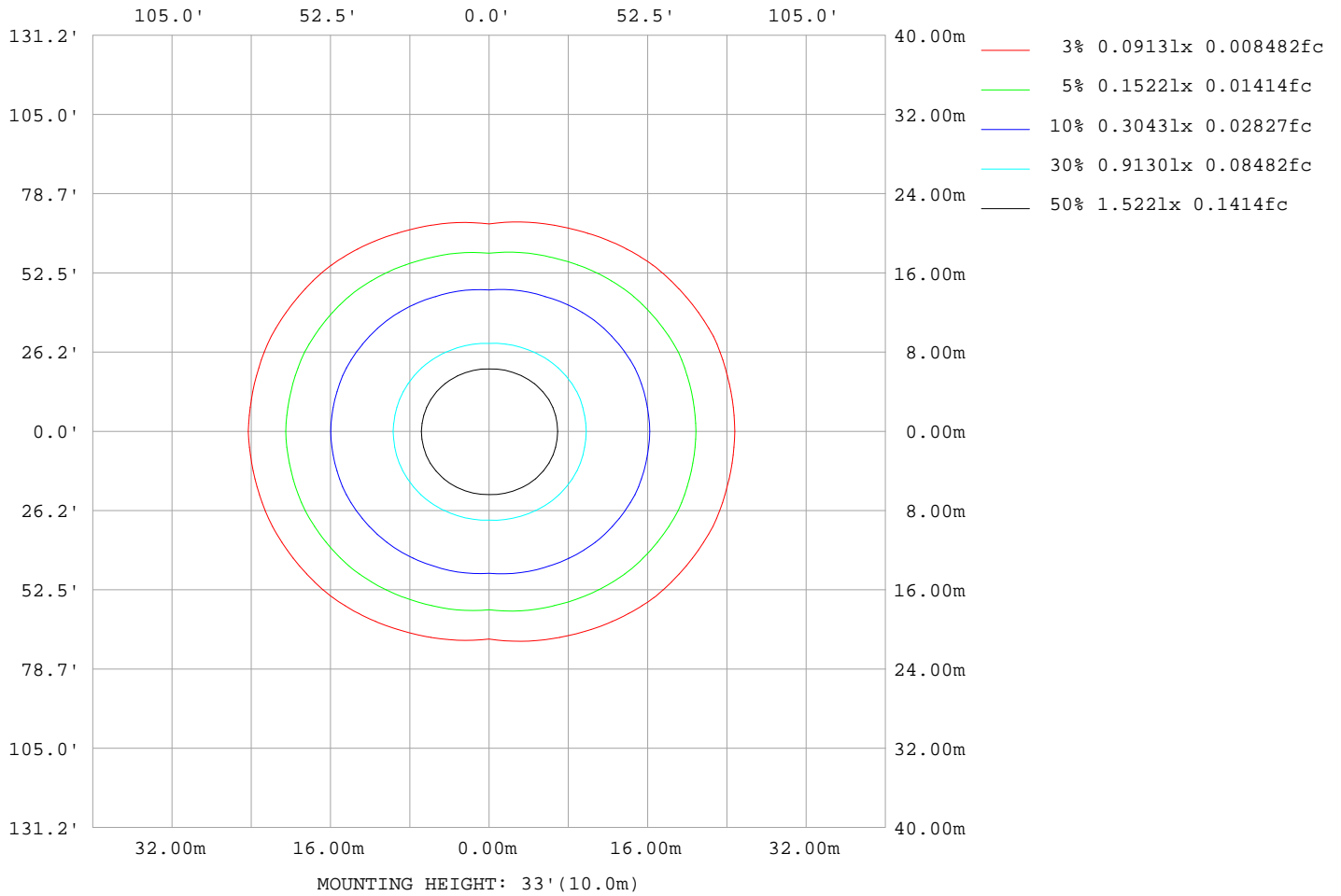
Note:The Curves indicate the illuminated area and the average illumination when the luminaire is at different distance.

C Range: 0 - 360DEG
 C Interval: 22.5DEG
 Test Speed: HIGH
 Temperature:25.3°C
 Operators:DAMIN
 Test Date:26 August 2024

γ Range: 0 - 180DEG
 γ Interval: 1.0DEG
 Test System:EVERFINE GO-2000B_V1 SYSTEM V2.00.488
 Humidity:65.0%
 Test Distance:10.460m [K=1.0000]
 Remarks:

ISOLUX DIAGRAM

Test:U:23.998V I:0.4369A P:10.485W PF:1.0000 Freq:0Hz Lamp Flux:1064.55x1 lm		
NAME: SL-ID-30K-HP-24	TYPE:	WEIGHT: KG
SPEC.: 10W	DIM.: 1000*10*2(MM)	SERIAL No.: 01
MFR.: Signcomplex	SUR.: 1000*10(MM)	Shielding Angle:



C Range: 0 - 360DEG
 C Interval: 22.5DEG
 Test Speed: HIGH
 Temperature:25.3°C
 Operators:DAMIN
 Test Date:26 August 2024

γ Range: 0 - 180DEG
 γ Interval: 1.0DEG
 Test System:EVERFINE GO-2000B_V1 SYSTEM V2.00.488
 Humidity:65.0%
 Test Distance:10.460m [K=1.0000]
 Remarks:

LED Avg.L Report

Test:U:23.998V I:0.4369A P:10.485W PF:1.0000 Freq:0Hz Lamp Flux:1064.55x1 lm		
NAME: SL-ID-30K-HP-24	TYPE:	WEIGHT: KG
SPEC.: 10W	DIM.: 1000*10*2(MM)	SERIAL No.: 01
MFR.: Signcomplex	SUR.: 1000*10(MM)	Shielding Angle:

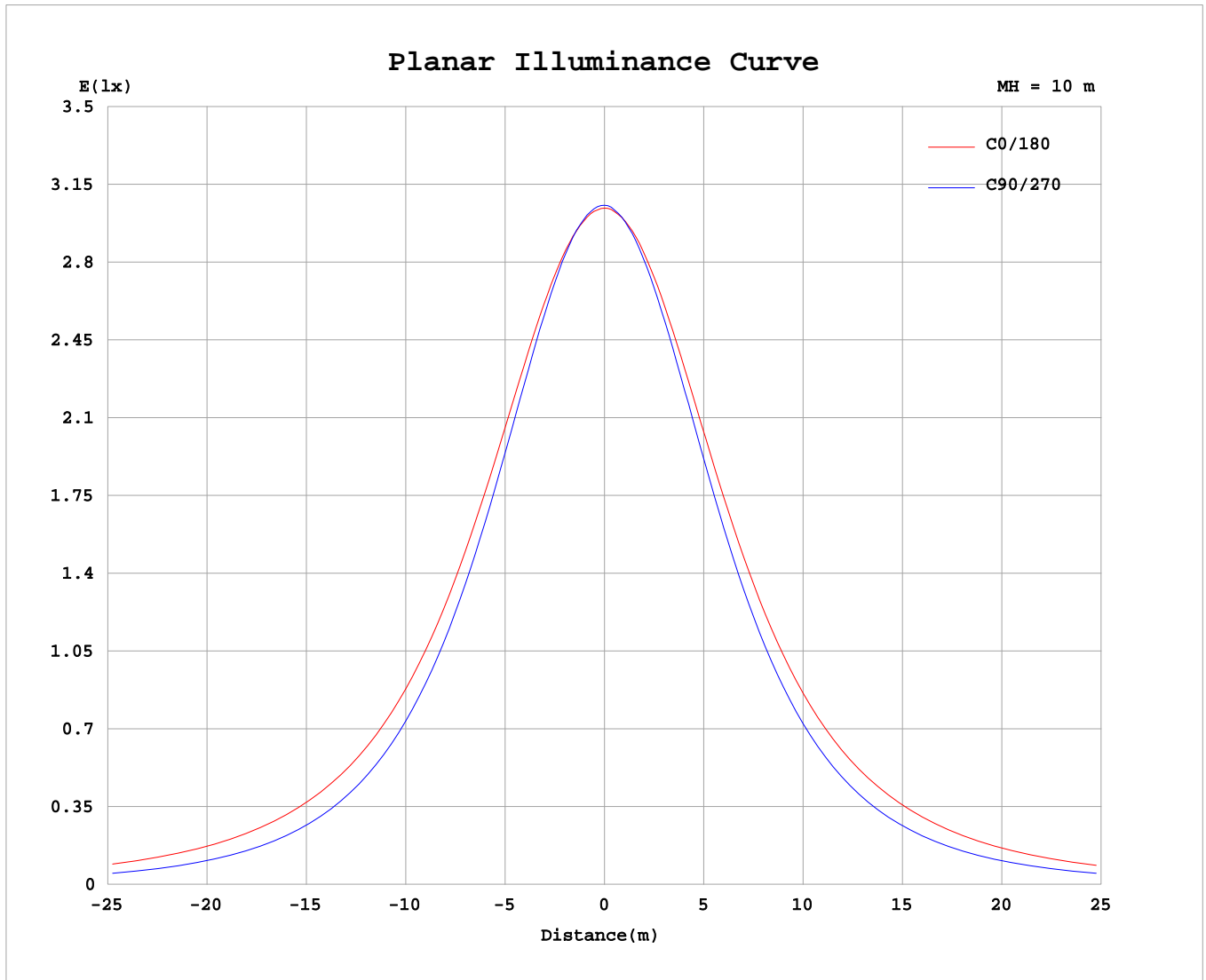
AvgL	cd/m2
L_0~180(65)av	43115
L_0~180(75)av	51685
L_0~180(85)av	45299
L_90~270(65)av	26339
L_90~270(75)av	22434
L_90~270(85)av	13535
L_45(65)av	37339
L_45(75)av	43878
L_45(85)av	44637

Standard: GB/T 29293-2012

C Range: 0 - 360DEG
 C Interval: 22.5DEG
 Test Speed: HIGH
 Temperature:25.3°C
 Operators:DAMIN
 Test Date:26 August 2024

γ Range: 0 - 180DEG
 γ Interval: 1.0DEG
 Test System:EVERFINE GO-2000B_V1 SYSTEM V2.00.488
 Humidity:65.0%
 Test Distance:10.460m [K=1.0000]
 Remarks:

Planar Illuminance Curve



C Range: 0 - 360DEG
 C Interval: 22.5DEG
 Test Speed: HIGH
 Temperature: 25.3°C
 Operators: DAMIN
 Test Date: 26 August 2024

γ Range: 0 - 180DEG
 γ Interval: 1.0DEG
 Test System: EVERFINE GO-2000B_V1 SYSTEM V2.00.488
 Humidity: 65.0%
 Test Distance: 10.460m [K=1.0000]
 Remarks:

LUMINOUS DISTRIBUTION INTENSITY DATA

Test:U:23.998V I:0.4369A P:10.485W PF:1.0000 Freq:0Hz Lamp Flux:1064.55x1 lm		
NAME: SL-ID-30K-HP-24	TYPE:	WEIGHT: KG
SPEC.: 10W	DIM.: 1000*10*2(MM)	SERIAL No.: 01
MFR.: Signcomplex	SUR.: 1000*10(MM)	Shielding Angle:

Table--1

UNIT: cd

C(DEG) γ (DEG)	0	22.5	45	67.5	90	112.5	135	157.5	180	202.5	225	247.5	270	292.5	315	337.5			
0	305	305	305	305	305	305	305	305	305	305	305	305	305	305	305	305			
5	305	305	305	305	304	305	304	304	305	305	304	304	303	304	304	305			
10	303	303	302	301	301	301	302	302	303	302	301	299	299	300	301	303			
15	301	301	299	296	295	296	297	299	300	298	296	293	292	293	297	300			
20	296	296	293	288	286	288	291	293	295	292	289	285	283	285	290	295			
25	291	290	285	279	275	277	282	286	288	285	280	274	271	275	282	288			
30	283	281	275	266	261	265	271	277	279	276	269	261	258	262	272	280			
35	274	272	263	253	246	250	259	266	269	265	257	246	241	248	260	270			
40	262	260	250	236	228	233	244	253	258	253	242	230	224	232	247	259			
45	250	247	235	218	208	215	228	239	244	239	227	212	204	214	232	245			
50	236	232	219	199	186	195	211	223	230	224	210	193	183	195	215	231			
55	221	217	201	179	163	174	193	207	215	208	192	173	161	175	198	216			
60	206	200	182	157	138	152	173	189	197	191	173	151	137	154	180	200			
65	187	182	163	135	112	129	153	169	177	171	155	130	111	133	161	182			
70	167	162	143	112	84.6	106	130	146	155	150	134	107	84.9	110	142	162			
75	142	139	121	89.4	57.4	81.7	101	111	125	123	111	85.5	58.7	87.6	121	141			
80	98.2	98.1	92.6	67.3	31.6	56.2	59.8	67.7	79.5	80.2	80.5	62.9	33.8	65.9	96.1	103			
85	52.8	52.5	48.1	39.4	10.8	16.0	20.2	12.9	26.2	27.9	33.9	36.0	12.8	42.6	53.3	57.4			
90	10.1	9.89	6.46	2.47	0.76	0.87	1.00	0.84	0.65	0.63	0.64	5.51	1.37	7.10	12.5	14.7			
95	1.39	1.27	0.87	0.66	0.57	1.00	0.95	1.00	0.82	0.74	0.78	0.62	0.62	0.71	0.93	1.50			
100	0.98	1.04	0.75	0.71	0.58	1.13	1.10	1.13	0.98	0.90	0.94	0.76	0.78	0.75	0.92	1.00			
105	1.00	1.04	0.85	0.84	0.97	1.29	1.23	1.30	1.14	1.06	1.08	0.92	0.95	0.91	1.07	1.01			
110	1.15	1.18	1.02	1.01	1.13	1.43	1.36	1.46	1.32	1.22	1.23	1.07	1.11	1.07	1.22	1.18			
115	1.29	1.33	1.17	1.15	1.29	1.54	1.51	1.58	1.46	1.37	1.40	1.22	1.29	1.23	1.38	1.33			
120	1.44	1.50	1.34	1.32	1.43	1.65	1.66	1.74	1.63	1.54	1.57	1.39	1.47	1.41	1.55	1.48			
125	1.61	1.67	1.51	1.48	1.58	1.77	1.81	1.89	1.80	1.71	1.73	1.57	1.63	1.58	1.74	1.65			
130	1.78	1.83	1.66	1.63	1.73	1.89	1.92	2.01	1.97	1.87	1.90	1.73	1.80	1.76	1.90	1.83			
135	1.90	1.97	1.80	1.78	1.86	1.98	2.02	2.12	2.08	2.01	2.02	1.90	1.96	1.92	2.06	1.98			
140	2.03	2.10	1.92	1.94	1.98	2.08	2.11	2.21	2.19	2.11	2.15	2.03	2.10	2.05	2.19	2.11			
145	2.14	2.20	2.05	2.08	2.10	2.20	2.20	2.30	2.29	2.20	2.26	2.15	2.23	2.17	2.31	2.20			
150	2.23	2.29	2.16	2.22	2.21	2.29	2.28	2.37	2.36	2.29	2.36	2.26	2.34	2.30	2.41	2.31			
155	2.32	2.38	2.26	2.37	2.30	2.39	2.35	2.45	2.44	2.37	2.44	2.36	2.45	2.39	2.48	2.39			
160	2.40	2.47	2.37	2.49	2.39	2.47	2.42	2.52	2.50	2.43	2.52	2.45	2.53	2.47	2.56	2.46			
165	2.49	2.56	2.47	2.57	2.47	2.55	2.48	2.56	2.57	2.50	2.60	2.51	2.58	2.52	2.56	2.51			
170	2.58	2.59	2.54	2.58	2.53	2.57	2.55	2.57	2.60	2.54	2.60	2.56	2.59	2.56	2.57	2.55			
175	2.62	2.62	2.57	2.60	2.57	2.59	2.57	2.58	2.61	2.57	2.60	2.58	2.60	2.58	2.58	2.58			
180	2.63	2.62	2.60	2.60	2.59	2.59	2.58	2.58	2.62	2.59	2.60	2.60	2.60	2.58	2.58	2.58			

C Range: 0 - 360DEG
 C Interval: 22.5DEG
 Test Speed: HIGH
 Temperature:25.3°C
 Operators:DAMIN
 Test Date:26 August 2024

γ Range: 0 - 180DEG
 γ Interval: 1.0DEG
 Test System:EVERFINE GO-2000B_V1 SYSTEM V2.00.488
 Humidity:65.0%
 Test Distance:10.460m [K=1.0000]
 Remarks: